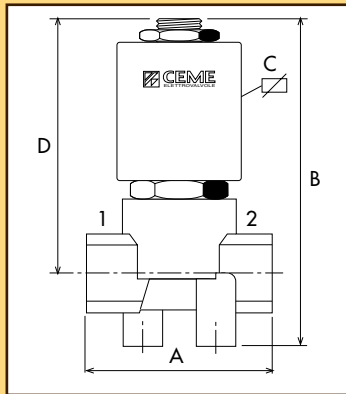


### CARATTERISTICHE SPECIFICATIONS

ATTACCHI PIPES in → out	Ø mm	CODICE CODE	KV m <sup>3</sup> /h	M.O.P.D. bar		DIMENSIONI/DIMENSIONS mm				PESO/WEIGHT Kg
				AC	DC	A	B	C	D	
1/8"	1,5	5201	0.070	20	-	R1/8"	62,5	40	-	0.120
1/8"	1,5	5211	0.070	17	10	33	63	40	52	0.135
1/8"	1,6	5252	0.075	25	12	30	63.6	40	50.6	0.135
1/8"	2,0	5252	0.110	17	10	30	63.6	40	50.6	0.135
1/8"	2,8	5252	0.180	4.5	1.5	30	63.6	40	50.6	0.135
FLANGIA / FLANGE	1,5	5270	0.070	17	10	29	56	40	-	0.130



### CARATTERISTICHE ELETTRICHE ELECTRICAL INFORMATION

V~						POTENZA/POWER		
	12	24	48	110	230	400	NOMINALE HOLDING	SPUNTO IN RUSH
	50	60	Hz	11VA	15VA			
V=	12	24	48	110				9W

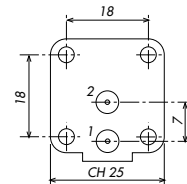
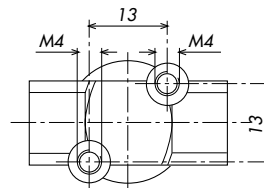
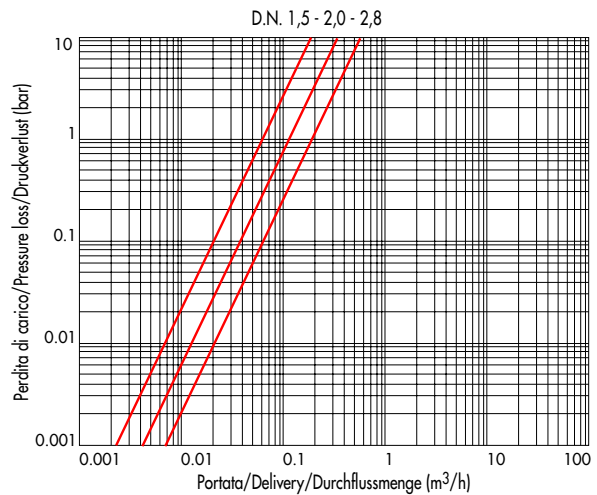
Per dettagli costruttivi sulle bobine vedi capitolo "INFORMAZIONI DI PROGETTO"  
For construction details of the coils see chapter "PROJECT INFORMATION"  
Ausführliche Daten über die Ventilsolenen finden Sie unter Abschnitt "TECHNISCHE INFORMATIONEN"

### MAX TEMPERATURA MAX TEMPERATURE

FLUIDI/FLUIDS				AMBIENTE/AMBIENT
NBR	EPDM	FPM	HNBR	80°C
90°C	140°C	150°C	110°C	

Disponibili bobine per temperature ambienti fino a 120°C  
Coils available for ambient temperatures until 120°C  
Spulen verfügbar für Umgebungstemperaturen bis zu 120°C

### DIAGRAMMA PERDITA DI CARICO PRESSURE LOSS DIAGRAM



5201

5211

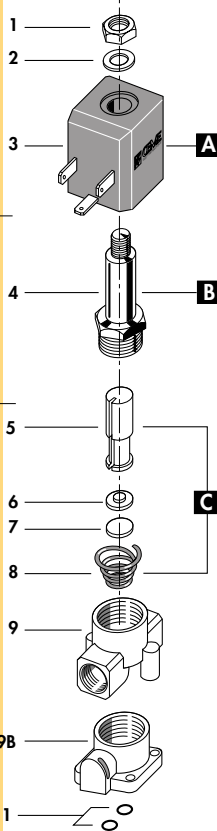
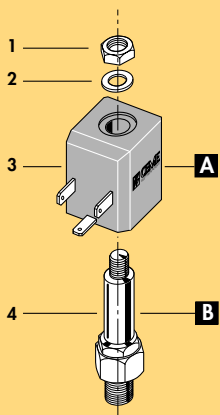
5270



5201

5211  
5270

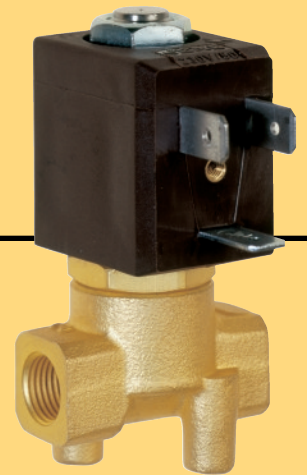
5252



1	Dado	Lock nut	Mutter
2	Rondella	Washer	Beilagscheibe
3	Bobina	Coil	Magnetspule
4	Cannotto	Tube guide	Plungerrohr
5	Nucleo mobile	Plunger	Plunger
6	Piattello	Support	Scheibe
7	Pastiglia	Seal	Dichtung
8	Molla	Spring	Feder
9	Corpo	Valve body base	Grundkörper
10	O-Ring	O-Ring	O-Ring
11	O-Ring	O-Ring	O-Ring

	RICAMBI	SPARE PARTS	ERSATZTEILE
<b>A</b>	Bobina	Coil	Magnetspule
<b>B</b>	Cannotto	Tube guide	Plungerrohr
<b>C</b>	Nucleo mobile	Plunger	Plunger

**ELETTROVALVOLA AZIONE DIRETTA 2/2 vie N.C.**  
**SOLENOID VALVE DIRECT ACTING 2/2 WAY N.C.**  
**DIREKTGESTEUERTES MAGNETVENTIL 2/2 WEGE S.G.**



I

**CARATTERISTICHE GENERALI**

**PRESSIONE MINIMA DI FUNZIONAMENTO** 0 bar

**PARTI A CONTATTO CON IL FLUIDO**

**TENUTA** EPDM ALIMENTARE - HNBR - NBR - FPM

**CORPO** OTTONE

**ORGANI INTERNI** ACCIAIO INOX

**VALVOLA FORNITA CON** TUBO GUIDA OTTONE (5201, 5211, 5270)

TUBO GUIDA INOX (5252)

- Tenuta metallica con il corpo per tenute sicure anche ad alte temperature di impiego.

- Migliore resistenza alla corrosione.

- SEDE DI TENUTA INOX.

- Particolarmente indicata per vapore fino a 155°C.

ACQUA - ARIA - VAPORE - GAS - OLII LEGGERI - GASOLIO

**FLUIDI**

**VALVOLA UNIDIREZIONALE**

**VALVOLA ISPEZIONABILE**

**POSIZIONE DI MONTAGGIO** Qualsiasi; sconsigliata quella con bobina rivolta verso il basso.

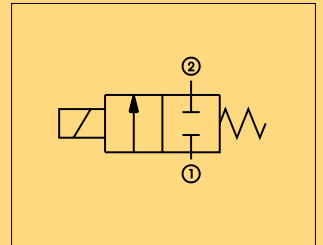
**TEMPERATURA AMBIENTE** 80°C, in D.C. per temperature superiori a 40°C, le performance (M.O.P.D.) potrebbero diminuire.

**ESECUZIONI SPECIALI**

NICHELATURA sul corpo

**ACCESSORI**

CONNETTORE TRIPOLARE UNI ISO 6952 (DIN 43650B) - IP65



UK

**GENERAL FEATURES**

**MINIMUM WORKING PRESSURE** 0 bar

**PARTS IN CONTACT WITH THE FLUID**

**SEALING** FOOD GRADE EPDM - HNBR - NBR - FPM

**BODY** BRASS

**INTERNAL PARTS** STAINLESS STEEL

**VALVE SUPPLIED WITH** BRASS TUBE GUIDE (5201, 5211, 5270)

STAINLESS STEEL TUBE GUIDE (5252)

- Metallic sealing with the body for safety sealing also for high temperature applications.

- Improved corrosion resistance.

- BODY SEALING SEAT IN STAINLESS STEEL.

- Particularly suitable for steam up to 155°C

WATER - AIR - STEAM - GAS - LIGHT OILS - DIESEL OIL

**FLUIDS**

**ONE WAY DIRECTION VALVE**

**SERVICEABLE VALVE**

**MOUNTING POSITION** Any, the position with the coil downwards is not recommended.

**AMBIENT TEMPERATURE** 80°C, in D.C. for temperatures higher than 40°C, the performances (M.O.P.D.) could decrease.

**SPECIAL EXECUTIONS**

NICKEL-PLATED VALVE BODY

**ACCESSORIES**

THREE POLE PLUG CONNECTOR UNI ISO 6952 (DIN 43650B)-IP65

D

**ALLGEMEINE MERKMALE**

**MINIMALER ARBEITSDRUCK** 0 bar

**MEDIUMS BERUEHRTE TEILE**

**DICHTUNG** EPDM FUER LEBENSMITTELANWENDUNGEN- HNBR - NBR - FPM

**KOERPER** MESSING

**INNERE ELEMENTE** EDELSTAHL

**LIEFERUMFANG** PLUNGERROHR AUS MESSING (5201, 5211, 5270)

PLUNGERROHR AUS EDELSTAHL (5252)

- Metallische Dichtung fuer einen sicheren Einsatz auch bei hohen Medium Temperaturen.

- Bessere Korrosionsbestaendigkeit.

- VENTILSITZ AUS EDELSTAHL

- DIE EDELSTAHLVERSION IST SPEZIELL GEEIGNET FUER DAMPF BIS ZU 155°C

WASSER - LUFT - DAMPF - GAS - LEICHTE OELE - DIESEL OEL

**MEDIUM**

**UNIDIREKTIONALES VENTIL**

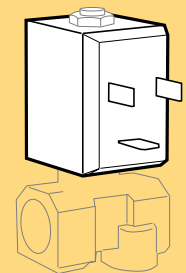
**VENTIL WARTUNGSFREUNDLICH**

**MONTAGEPOSITION** Keine Einschränkungen. Fuer Montage mit dem Spulenkopf senkrecht nach unten, auf Anfrage.

**UMGEBUNGSTEMPERATUR** 80°C .Im D.C.- Betrieb koennen Temperaturen ueber 40°C, die Schaltkreaefte (M.O.P.D.) des Ventils beeintraechtigen

**SONDERAUSFUEHRUNGEN** Vernickelter Ventilkoeper.

**ZUBEHOER** DREIPOLIGER STECKER UNI ISO 6952 (DIN 43650B)-IP65



**BOBINA TIPO B4**  
**COIL TYPE B4**  
**SPULE TYP B4**