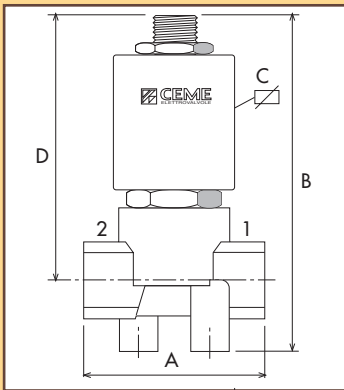


CARATTERISTICHE SPECIFICATIONS



ATTACCHI / PIPES				CODICE CODE	KV m ³ /h	M.O.P.D. bar		DIMENSIONI/DIMENSIONS mm				PESO/WEIGHT Kg
in → out	Ømm	3a via-3rd way	Ømm			AC	DC	A	B	C	D	
1/8"	1,5	1/8"	1,5	5311	0.080	11	9	33	68	40	55	0.125
1/8"	1,5	1/8"	1,5	5313	0.060	11	9	30	68	40	55	0.130
1/8"	2,0	1/8"	1,5	5313	0.090	6,5	5,5	30	68	40	55	0.130
1/8"	2,5	1/8"	1,5	5313	0.130	4,5	3,5	30	68	40	55	0.130
1/8"	1,0	(*)	1,5	5315	0.040	20	-	30	68	40	60	0.125
1/8"	1,5	(*)	1,5	5315	0.080	11	9	30	68	40	60	0.125
FLANGIA / FLANGE	1,5	1/8"	1,5	5370	0.065	11	9	29	59	40	-	0.130

(*) Vedi tabella

CARATTERISTICHE ELETTRICHE ELECTRICAL INFORMATION

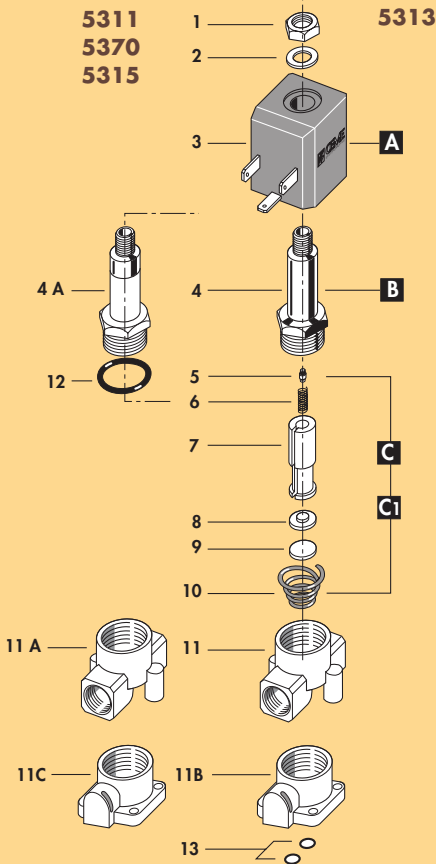
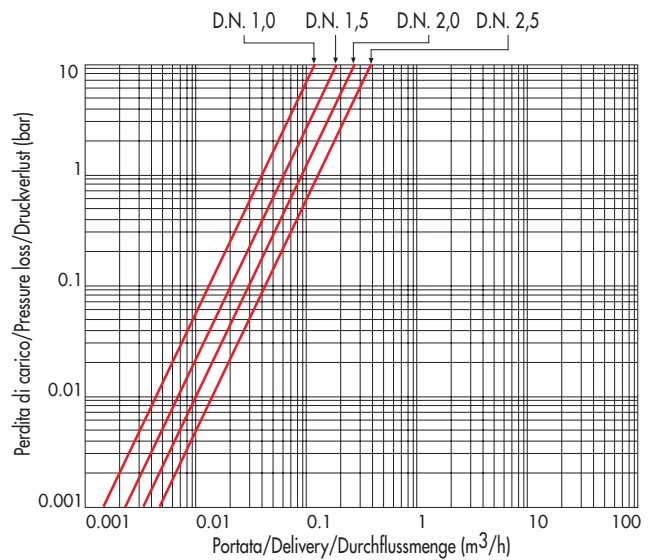
V~	12	24	48	110	230	400	POTENZA/POWER				
							NOMINALE HOLDING	SPUNTO IN RUSH			
							50	60	Hz	11VA	15VA
V=	12	24	48	110						9W	

Per dettagli costruttivi sulle bobine vedi capitolo "INFORMAZIONI DI PROGETTO"
For construction details of the coils see chapter "PROJECT INFORMATION"
Ausführliche Daten über die Ventilsolenen finden Sie unter Abschnitt "TECHNISCHE INFORMATIONEN"

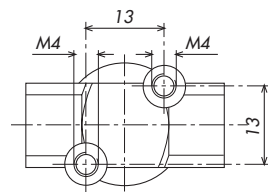
MAX TEMPERATURA MAX TEMPERATURE

	FLUIDI/FLUIDS				AMBIENTE/AMBIENT
	NBR	EPDM	FPM	HNBR	
5311-5315-5370	90°C	140°	140°	110°	80°C
5313	-	155°	150°	-	

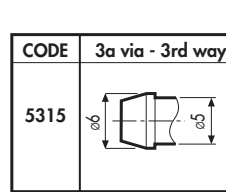
DIAGRAMMA PERDITA DI CARICO PRESSURE LOSS DIAGRAM



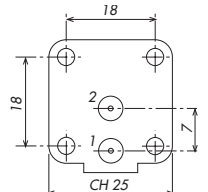
1 Dado	Lock nut	Mutter
2 Rondella	Washer	Beilagscheibe
3 Bobina	Coil	Magnetspule
4 Cannotto	Tube guide	Plungerrohr
5 Gommino di tenuta	Rubber seal	Dichtung
6 Molla	Spring	Feder
7 Nucleo mobile	Plunger	Plunger
8 Piattello	Support	Scheibe
9 Pastiglia	Seal	Dichtung
10 Molla	Spring	Feder
11 Corpo	Valve body base	Grundkörper
12 O-ring	O-ring	O-Ring
13 O-ring	O-ring	O-Ring
RICAMBI	SPARE PARTS	ERSATZTEILE
A Bobina	Coil	Magnetspule
B Cannotto	Tube guide	Plungerrohr
C Nucleo mobile (C.A.)	Plunger (A.C.)	Plunger (A.C.)
C1 Nucleo mobile (C.C.)	Plunger (D.C.)	Plunger (D.C.)



5311 - 5313



5315



5370



ELETTROVALVOLA AZIONE DIRETTA 3/2 VIE N.C.
SOLENOID VALVE DIRECT ACTING 3/2 WAY N.C.
DIREKTGESTEUERTES MAGNETVENTIL 3/2 WEGE S.G.



I

CARATTERISTICHE GENERALI

PRESSIONE MINIMA DI FUNZIONAMENTO 0 bar

PARTI A CONTATTO CON IL FLUIDO

TENUTA HNBR - NBR - FPM - EPDM

CORPO OTTONE

ORGANI INTERNI ACCIAIO INOX

FLUIDI ACQUA - ARIA - VAPORE - GAS - OLII LEGGERI - GASOLIO

VERSIONE STANDARD

N.C. con ingresso da attacco n°2

VALVOLA ISPEZIONABILE

POSIZIONE DI MONTAGGIO Qualsiasi.

TEMPERATURA AMBIENTE 80°C, in D.C. per temperature superiori a 40°C, le performance (M.O.P.D.) potrebbero diminuire.

ESECUZIONI SPECIALI

NICHELATURA sul corpo

TUBO GUIDA INOX: Tenuta metallica con il corpo per tenute sicure anche ad alte temperature di impiego.

Migliore resistenza alla corrosione.

SEDE DI TENUTA INOX

LA VALVOLA PUÒ ESSERE USATA OLTRE ALLA VERSIONE STANDARD, RIPORTATA A CATALOGO

NORMALMENTE CHIUSA (INGRESSO DA 2), ANCHE COME: DEVIATRICE (INGRESSO DA 1)

UNIVERSALE

CONNETTORE TRIPOLARE UNI ISO 6952 (DIN 43650B) - IP65

ACCESSORI

UK

GENERAL FEATURES

MINIMUM WORKING PRESSURE 0 bar

PARTS IN CONTACT WITH THE FLUID

SEALING HNBR - NBR - FPM - EPDM

BODY BRASS

INTERNAL PARTS STAINLESS STEEL

FLUIDS WATER - AIR - STEAM - GAS - LIGHT OILS - DIESEL OIL

STANDARD VERSION

Normally closed, inlet from port 2

SERVICEABLE VALVE

MOUNTING POSITION Any.

AMBIENT TEMPERATURE 80°C, in D.C. for temperatures higher than 40°C, the performances (M.O.P.D.) could decrease.

SPECIAL EXECUTIONS

NICKEL-PLATED VALVE BODY

STAINLESS STEEL TUBE GUIDE: Metallic sealing with the body for safety sealing also for high temperature applications

Improved corrosion resistance.

BODY SEALING SEAT IN STAINLESS STEEL

In addition to the standard version shown in the catalogue (normally closed inlet from port 2), the valve can also be used as a diverter (inlet from port 1) or universal.

THREE POLE PLUG CONNECTOR UNI ISO 6952 (DIN 43650B)-IP65

ACCESSORIES

D

ALLGEMEINE MERKMALE

MINIMALER ARBEITSDRUCK 0 bar

MEDIUMS BERUEHRTE TEILE

DICHTUNG HNBR - NBR - FPM - EPDM

KOERPER MESSING

INNERE ELEMENTE EDELSTAHL

MEDIUM WASSER- LUFT- DAMPF - GAS - LEICHTE OELE, DIESEL OEL

STANDARD AUSFUEHRUNG Stromlos geschlossen Eingang 2

VENTIL WARTUNGSFREUNDLICH

MONTAGEPOSITION Keine Einschränkungen.

UMGEBUNGSTEMPERATUR 80°C, im D.C.- Betrieb koennen Temperaturen ueber 40°C, die Schaltkrafte (M.O.P.D.) des Ventils beeintraechtigen.

SONDERAUSFUEHRUNGEN

Vernickelter Ventilkoeper.

PLUNGERROHR AUS EDELSTAHL: Metallische Dichtung fuer einen sicheren Einsatz auch bei hohen Medium Temperaturen.

Bessere Korrosionsbestaendigkeit.

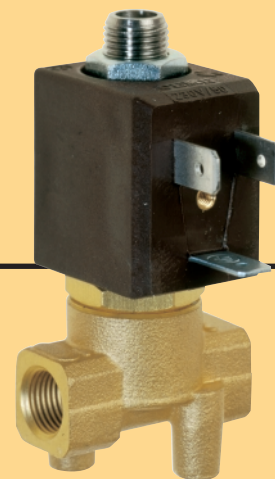
VENTILSITZ AUS EDELSTAHL

ANSCHLUSSMOEGLICHKEITEN: Dieser Ventiltyp ermoeoglicht eine freie Anschlusswahl:

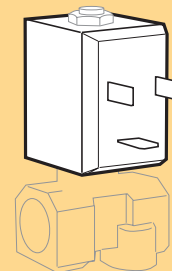
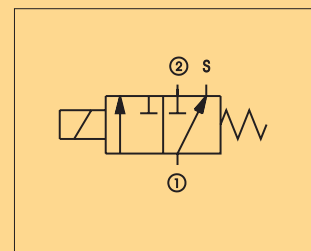
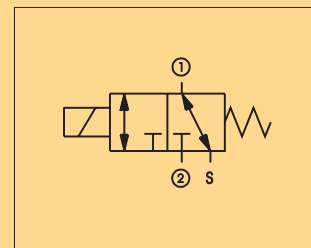
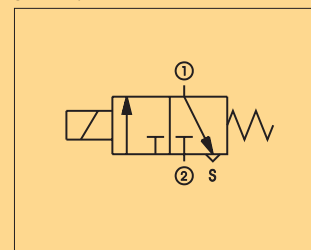
In Ruhestellung (S.G.) befindet sich Eingang 1 zu 3 in Verbindung.

DREIPOLIGER STECKER UNI ISO 6952 (DIN 43650B)-IP65

ZUBEHOER



STANDARD



BOBINA TIPO B4
COIL TYPE B4
SPULE TYP B4