

CARATTERISTICHE SPECIFICATIONS

ATTACCHI PIPES in → out	Ø mm	CODICE CODE	KV m ³ /h	M.O.P.D. bar		DIMENSIONI/DIMENSIONS mm				PESO/WEIGHT Kg
				AC	DC	A	B	C	D	
ODF 6 mm	1,5	5906	0.080	25	15	107	48	40	41	0.120
ODF 1/4"	2,5	5907	0.160	18	5	107	48	40	41	0.120
ODF 6 mm	1,5	5925	0.080	25	15	59	86.5	40	38.5	0.100
ODF 6 mm	2,0	5925	0.120	25	8	59	86.5	40	38.5	0.100
ODM 5 mm	1,5	5934	0.065	28	15	116	114	49	39.5	0.308
ODM 5 mm	1,5	5935	0.065	28	15	122	114	53.5	39.5	0.382

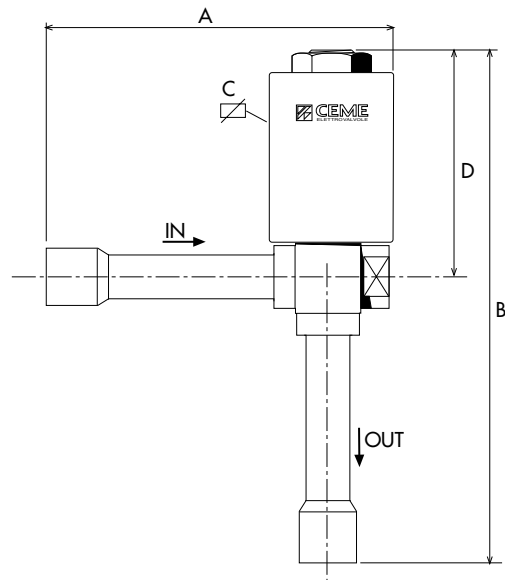
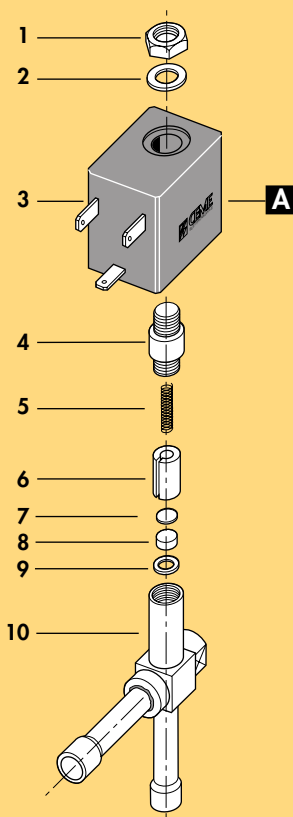
CARATTERISTICHE ELETTRICHE ELECTRICAL INFORMATION

							POTENZA/POWER				
							NOMINALE HOLDING	SPUNTO IN RUSH			
V~	12	24	48	110	230	400	50	60	Hz	13VA	14,5VA
V=	12	24	48	110						10W	

Per dettagli costruttivi sulle bobine vedi capitolo "INFORMAZIONI DI PROGETTO"
For construction details of the coils see chapter "PROJECT INFORMATION"
Ausführliche Daten über die Ventilspulnen finden Sie unter Abschnitt "TECHNISCHE INFORMATIONEN"

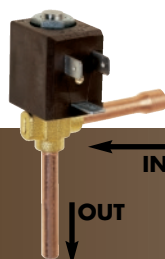
MAX TEMPERATURA MAX TEMPERATURE

FLUIDI/FLUIDS			AMBIENTE/AMBIENT
PTFE			80°C
-45+125°C			

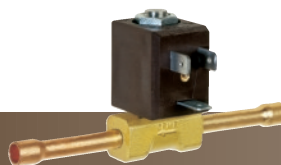


1 Dado	Lock nut	Mutter
2 Rondella	Washer	Beilagscheibe
3 Bobina	Coil	Magnetspule
4 Nucleo fisso	Tube top	Kern
5 Molla	Spring	Feder
6 Nucleo mobile	Plunger	Plunger
7 Piattello	Support	Scheibe
8 Pastiglia	Seal	Dichtung
9 Rondella	Washer	Spindeldichtung
10 Corpo	Valve body base	Grundkörper
RICAMBI	SPARE PARTS	ERSATZTEILE
A Bobina	Coil	Magnetspule

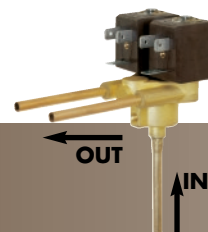
5925



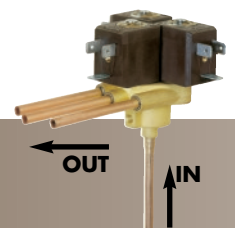
5906 - 5907



5934



5935



serie 59

ELETTROVALVOLA AZIONE DIRETTA 2/2 VIE N.C.
SOLENOID VALVE DIRECT ACTING 2/2 WAY N.C.
DIREKTGESTEUERTES MAGNETVENTIL 2/2 WEGE S.G.



I

CARATTERISTICHE GENERALI

PRESSIONE MINIMA DI FUNZIONAMENTO	0 bar
PARTI A CONTATTO CON IL FLUIDO	
TENUTA	PTFE
CORPO	OTTONE
ORGANI INTERNI	ACCIAIO INOX
FLUIDI	TUTTI I TIPI DI FLUIDI REFRIGERANTI ESCLUSA AMMONIACA (NH ₃)
VALVOLA UNIDIREZIONALE	
VALVOLA NON ISPEZIONABILE	
POSIZIONE DI MONTAGGIO	Qualsiasi. Per ottenere le massime prestazioni le valvole devono essere montate con la bobina rivolta verso l'alto; si sconsiglia quella con bobina rivolta verso il basso
TEMPERATURA AMBIENTE	80°C, in D.C. per temperature superiori a 40°C, le performance (M.O.P.D.) potrebbero diminuire
ESECUZIONI SPECIALI	TENUTA IN NEOPRENE
ACCESSORI	CONNETTORE TRIPOLARE UNI ISO 6952 (DIN 43650B) - IP65

UK

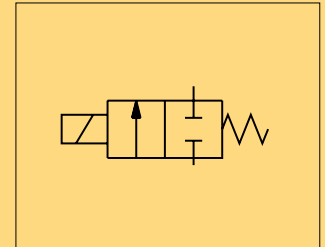
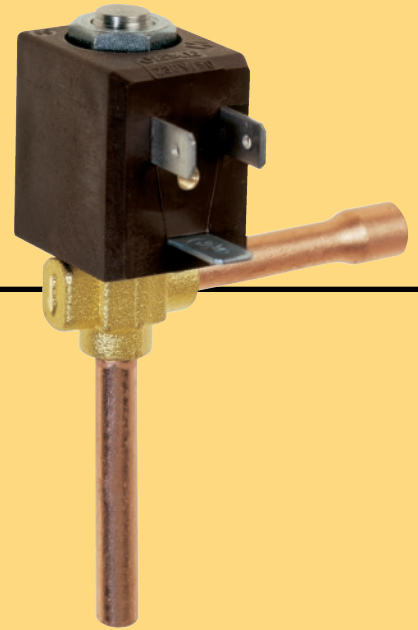
GENERAL FEATURES

MINIMUM WORKING PRESSURE	0 bar
PARTS IN CONTACT WITH THE FLUID	
SEALING	PTFE
BODY	BRASS
INTERNAL PARTS	STAINLESS STEEL
FLUIDS	ALL TYPES OF REFRIGERANT FLUIDS EXCEPT AMMONIA (NH ₃)
ONE WAY DIRECTION VALVE	
NON-SERVICEABLE VALVE	
MOUNTING POSITION	Any; to obtain the best performances the valves has to be installed with the coil vertical; the position with the coil downwards is not recommended
AMBIENT TEMPERATURE	80°C, in D.C. for temperatures higher than 40°C, the performances (M.O.P.D.) could decrease.
SPECIAL EXECUTIONS	SEALING IN NEOPRENE
ACCESSORIES	THREE POLE PLUG CONNECTOR UNI ISO 6952 (DIN 43650B)-IP65

D

ALLGEMEINE MERKMALE

MINIMALER ARBEITSDRUCK	0 bar
MEDIUMS BERUEHRTE ELEMENTE	
DICHTUNG	PTFE
KOERPER	MESSING
INNERE ELEMENTE	EDELSTAHL
MEDIEN	ALLE ARTEN VON KUEHLMITTEL AUSSER AMMONIAK (NH ₃)
UNIDIREKTIONALES VENTIL	
VENTIL WARTUNGSFREI	
MONTAGEPOSITION	Keine Einschränkungen, um beste Leistungen zu erreichen, muessen die Ventile mit der Spule senkrecht nach oben eingebaut werden. Fuer Montage mit dem Spulenkopf senkrecht nach unten, auf Anfrage.
UMGEBUNGSTEMPERATUR	80°C, im D.C- Betrieb, koennen Temperaturen ueber 40°C, die Schaltkraefte(M.O.P.D.)des Ventils beeintraehtigen.
SONDERAUSFUEHRUEHRUNGEN	
	DICHTUNG AUS NEOPRENE
ZUBEHOER	DREIPOLIGER STECKER UNI ISO 6952 (DIN 43650B)-IP65

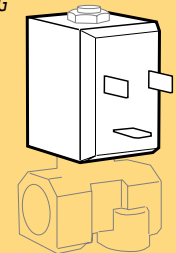


NEW

TRA LE PIÙ PICCOLE E COMPATTE
 ELETTOVALVOLE SUL MERCATO
 ALTE PRESTAZIONI
5934, 5935
 UNICO CORPO UN INGRESSO,
 DUE O TRE USCITE
 RIDUZIONE COSTI E TEMPI D'INSTALLAZIONE

ONE OF THE SMALLEST AND COMPACT
 VALVES PRESENT ON THE MARKET
 HIGH PERFORMANCES
5934, 5935
 ONE BODY WITH SINGLE INLET,
 TWO OR THREE OUTLETS
 REDUCTION OF COST AND INSTALLATION TIME

KLEINE KOMPAKTE BAUFORM
 HOHEN LEISTUNGEN
5934, 5935
 EIN KOERPER MIT EINEM EINGANGSANSCHLUSS,
 ZWEI BZW.
 DREI AUSGANGSANSCHLUESSEN
 KOSTENERSPARNISS DURCH MONTAGEZEIT
 REDUZIERUNG



BOBINA TIPO B4
COIL TYPE B4
SPULE TYP B4