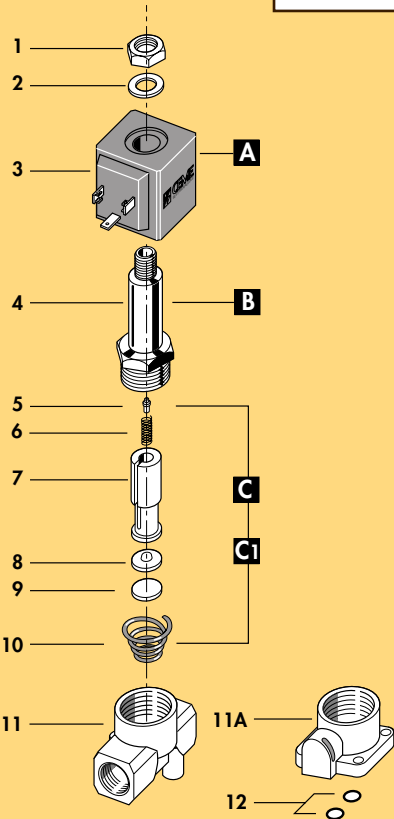
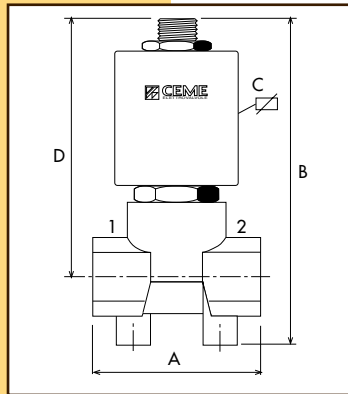


CARATTERISTICHE SPECIFICATIONS

ATTACCHI PIPES in → out	Ø mm	CODICE CODE	KV m ³ /h	M.O.P.D. bar		DIMENSIONI/DIMENSIONS mm				PESO/WEIGHT Kg
				AC	DC	A	B	C	D	
1/8"	1,5	6211	0.070	15	10	35	84,5	47	69	0.250
1/8"	2,0	6211	0.120	10	7	35	84,5	47	69	0.250
1/8"	2,8	6211	0.210	5	3	35	84,5	47	69	0.250
1/4"	1,5	6212	0.070	15	10	35	84,5	47	69	0.230
1/4"	2,0	6212	0.120	10	7	35	84,5	47	69	0.230
1/4"	2,8	6212	0.210	5	3	35	84,5	47	69	0.230
FLANGIA / FLANGE	1,5	6270	0.065	15	10	33	67	47	-	0.220
FLANGIA / FLANGE	2,0	6270	0.110	10	7	33	67	47	-	0.220



CARATTERISTICHE ELETTRICHE ELECTRICAL INFORMATION

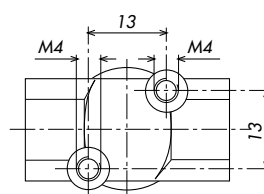
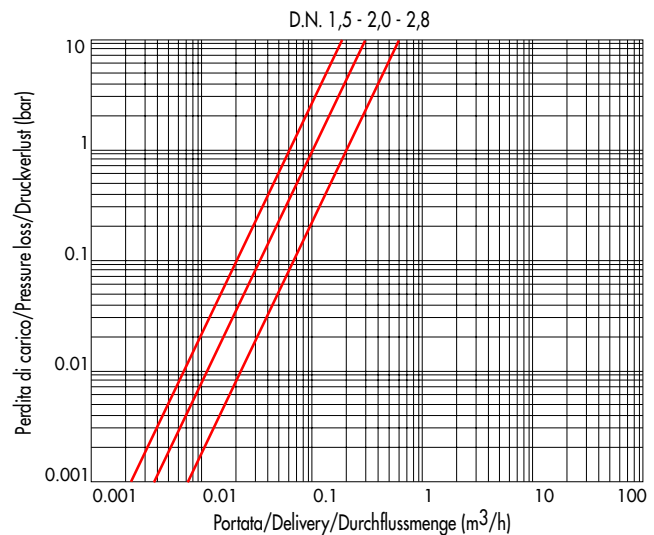
V~	12	24	48	110	230	400	50	60	Hz	POTENZA/POWER	
										NOMINALE HOLDING	SPUNTO IN RUSH
V=	12	24	48	110						16W	

Per dettagli costruttivi sulle bobine vedi capitolo "INFORMAZIONI DI PROGETTO"
For construction details of the coils see chapter "PROJECT INFORMATION"
Ausführliche Daten über die Ventilsolenen finden Sie unter Abschnitt "TECHNISCHE INFORMATIONEN"

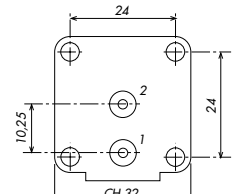
MAX TEMPERATURA MAX TEMPERATURE

FLUIDI/FLUIDS				AMBIENTE/AMBIENT
NBR	EPDM	FPM	HNBR	80°C
90°C	150°C	150°C	110°C	

DIAGRAMMA PERDITA DI CARICO PRESSURE LOSS DIAGRAM



6211-12



6270



1	Dado	Lock nut	Mutter
2	Rondella	Washer	Beilagscheibe
3	Bobina	Coil	Magnetspule
4	Cannotto	Tube guide	Plungerrohr
5	Gommino di tenuta	Rubber seal	Dichtung
6	Molla	Spring	Feder
7	Nucleo mobile	Plunger	Plunger
8	Plattello	Support	Scheibe
9	Pastiglia	Seal	Dichtung
10	Molla	Spring	Feder
11	Corpo	Valve body base	Grundkörper
12	O-ring	O-ring	O-ring

RICAMBI	SPARE PARTS	ERSATZTEILE
A Bobina	Coil	Magnetspule
B Cannotto	Tube guide	Plungerrohr
C Nucleo mobile (C.A.)	Plunger (A.C.)	Plunger (A.C.)
C1 Nucleo mobile (C.C.)	Plunger (D.C.)	Plunger (D.C.)

ELETTROVALVOLA AZIONE DIRETTA 3/2 VIE N.C.
SOLENOID VALVE DIRECT ACTING 3/2 WAY N.C.
DIREKTGESTEUERTES MAGNETVENTIL 3/2 WEGE S.G.



I

CARATTERISTICHE GENERALI

PRESSIONE MINIMA DI FUNZIONAMENTO 0 bar

PARTI A CONTATTO CON IL FLUIDO

TENUTA EPDM - NBR - FPM - HNBR

CORPO OTTONE CON SEDE DI TENUTA INOX

TUBO GUIDA INOX - Tenuta metallica con il corpo per tenute sicure anche ad alte temperature di impiego.
 - Migliore resistenza alla corrosione.

ORGANI INTERNI ACCIAIO INOX

FLUIDI ACQUA - ARIA - VAPORE - GAS - OLII LEGGERI - GASOLIO

VERSIONE STANDARD N.C. con ingresso da attacco n°2

VALVOLA ISPEZIONABILE

POSIZIONE DI MONTAGGIO Qualsiasi.
 80°C, in D.C. per temperature superiori a 40°C, le performance (M.O.P.D.) potrebbero diminuire.

TEMPERATURA AMBIENTE

ESECUZIONI SPECIALI NICHELATURA sul corpo
 LA VALVOLA PUÒ ESSERE USATA OLTRE ALLA VERSIONE STANDARD, RIPORTATA A CATALOGO NORMALMENTE CHIUSA (INGRESSO DA 2), ANCHE COME:
 - DEVIATRICE (INGRESSO DA 1)
 - UNIVERSALE

ACCESSORI

CONNETTORE TRIPOLARE UNI ISO 4400 (DIN 43650A) IP65
 BASETTE componibili di distribuzione-MANIFOLDS (6270)

UK

GENERAL FEATURES

MINIMUM WORKING PRESSURE 0 bar

PARTS IN CONTACT WITH THE FLUID

SEALING EPDM - NBR - FPM - HNBR

BODY BRASS WITH SEALING SEAT IN STAINLESS STEEL

STAINLESS STEEL TUBE GUIDE

- Metallic sealing with the body for safety sealing also for high temperature applications.
 - Improved corrosion resistance.

INTERNAL PARTS STAINLESS STEEL

FLUIDS WATER - AIR - STEAM - GAS - LIGHT OILS - DIESEL OIL

STANDARD VERSION N.C. with inlet from port 2

SERVICEABLE VALVE

MOUNTING POSITION Any.
 80°C, in D.C. for temperatures higher than 40°C, the performances (M.O.P.D.) could decrease.

AMBIENT TEMPERATURE

SPECIAL EXECUTIONS NICKEL-PLATED VALVE BODY
 - IN ADDITION TO THE STANDARD VERSION, SHOWN IN THE CATALOGUE (NORMALLY CLOSED INLET FROM PORT 2), THE VALVE CAN ALSO BE USED AS A DIVERTER (INLET FROM PORT 1) OR UNIVERSAL.

ACCESSORIES

THREE POLE PLUG CONNECTOR UNI ISO 4400 (DIN 43650A) IP65
 FLANGED BASE WHICH ALLOWS MANIFOLD MOUNTING (6270)

D

ALLGEMEINE MERKMALE

MINIMALER ARBEITSDRUCK 0 bar

MEDIUMS BERUEHRTE TEILE

DICHTUNG EPDM - NBR - FPM - HNBR

KOERPER MESSING MIT VENTILSITZ AUS EDELSTAHL

PLUNGERROHR AUS EDELSTAHL

- Metallische Dichtung fuer einen sicheren Einsatz auch bei hohen Medien Temperaturen.
 - Bessere Korrosionsbestaendigkeit.

INNERE ELEMENTE EDELSTAHL

MEDIEN WASSER - LUFT - DAMPF - GAS - LEICHTE OELE - DIESEL OEL

STANDARD AUSFUEHRUNG S.G. Eingang 2

VENTIL WARTUNGSFREUNDLICH

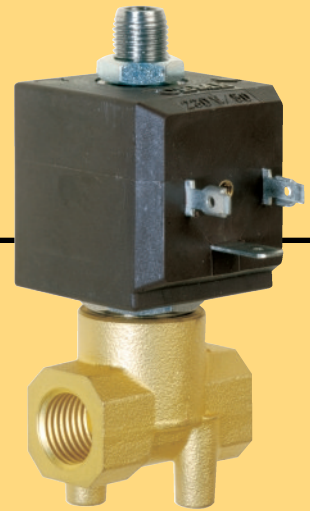
MONTAGEPOSITION Keine Einschränkungen.
 80°C, im D.C. -Betrieb koennen Temperaturen ueber 40°C, die Schaltkraefte (M.O.P.D.) des Ventils beeintraechtigen.

UMGEBUNGSTEMPERATUR

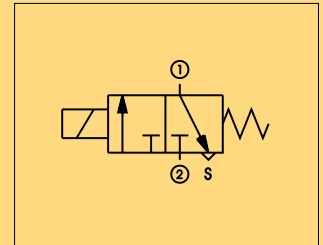
SONDERAUSFUEHRUNGEN VERNICKELTER VENTILKOERPER.

ANSCHLUSSMOEGlichkeiten:
 -DIESER VENTILTYP ERMOEGLICHT EINE FREIE ANSCHLUSSWAHL:
 IN RUHESTELLUNG (S.G.) BEFINDET SICH EINGANG 1 ZU 3 IN VERBINDUNG
 DREI-POLIGER STECKER UNI ISO 4400 (DIN 43650A) IP65
 ZUSAMMENSETZBARE MONTAGEPLATTFORMEN (FLANSCH) FUEHR MEHRFACHVERTEILUNG (6270)

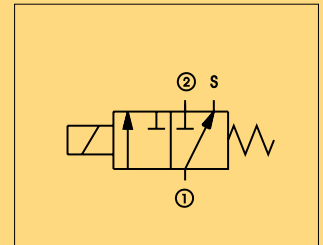
ZUBEHOER



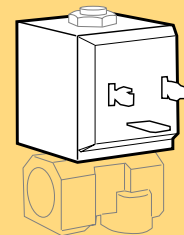
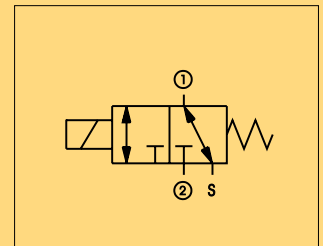
STANDARD



DEVIATRICE - DIVERTER



UNIVERSALE - UNIVERSAL



BOBINA TIPO B6
 COIL TYPE B6
 SPULE TYP B6