

### CARATTERISTICHE SPECIFICATIONS

ATTACCHI PIPES in → out	Ø mm	CODICE CODE	KV m <sup>3</sup> /h	M.O.P.D. bar		DIMENSIONI/DIMENSIONS mm				PESO/WEIGHT Kg
				AC	DC	A	B	C	D	
1/8" M-M	1,9	6500	0.100	25	25	33	73.5	47	-	0.190
1/8" M-M	2,5	6500	0.130	10	-	33	73.5	47	-	0.190
1/8"	1,5	6511	0.080	22	17	35	85	47	69	0.270
1/8"	2,0	6511	0.125	20	10	35	85	47	69	0.270
1/8"	2,8	6511	0.265	10	7	35	85	47	69	0.270
1/4"	1,5	6512	0.080	22	17	35	85	47	69	0.260
1/4"	2,0	6512	0.125	20	10	35	85	47	69	0.260
1/4"	2,8	6512	0.265	10	7	35	85	47	69	0.260
FLANGIA / FLANGE	1,5	6570	0.080	22	17	33	67	47	-	0.235
FLANGIA / FLANGE	2,0	6570	0.125	20	10	33	67	47	-	0.235
FLANGIA / FLANGE	2,8	6570	0.265	10	7	33	67	47	-	0.235

### CARATTERISTICHE ELETTRICHE ELECTRICAL INFORMATION

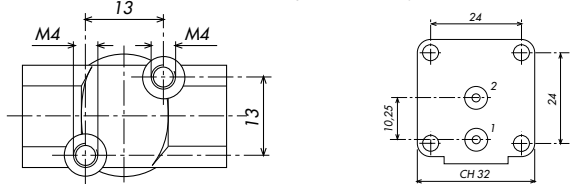
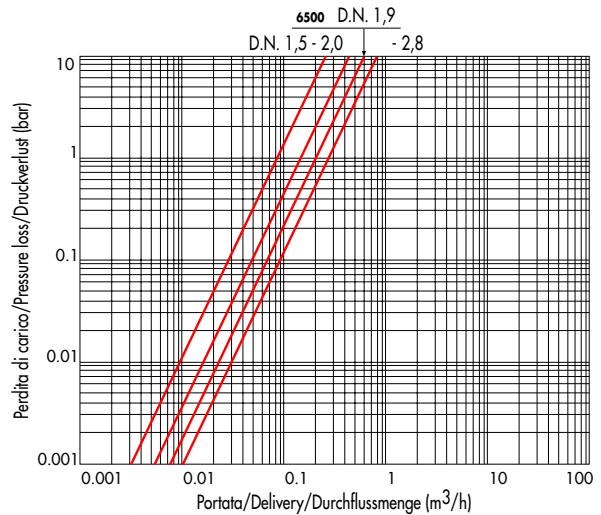
V~	NOMINALE HOLDING					SPUNTO IN RUSH		
	12	24	48	110	230	400	15VA	25VA
V=	12	24	48	110			16W	

Per dettagli costruttivi sulle bobine vedi capitolo "INFORMAZIONI DI PROGETTO"  
For construction details of the coils see chapter "PROJECT INFORMATION"  
Ausführliche Daten über die Ventilspulnen finden Sie unter Abschnitt "TECHNISCHE INFORMATIONEN"

### MAX TEMPERATURA MAX TEMPERATURE

FLUIDI/FLUIDS			AMBIENTE/AMBIENT
NBR	EPDM	FPM	80°C
90°C	150°C	150°C	

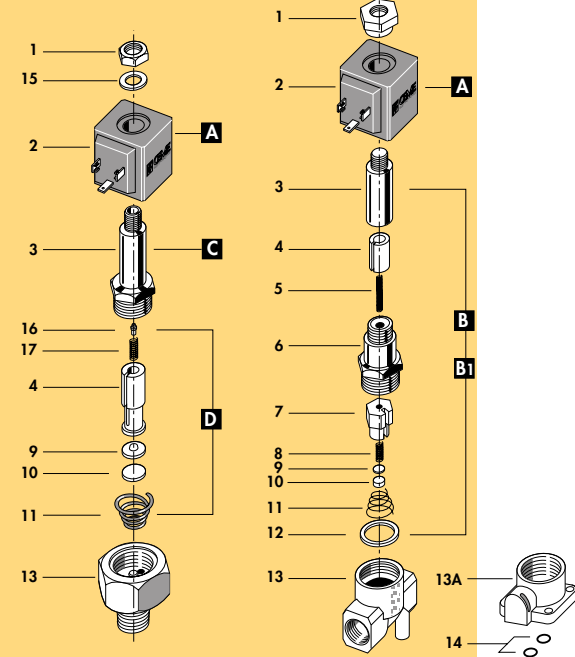
### DIAGRAMMA PERDITA DI CARICO PRESSURE LOSS DIAGRAM



6500

6511 - 6512

6570



1	Dado	Lock nut	Mutter
2	Bobina	Coil	Magnetspule
3	Cannotto	Tube guide	Plungerrohr
4	Nucleo mobile	Plunger	Plunger
5	Molla	Spring	Feder
6	Cannotto-Nucleo fisso	Tube guide-Tube top	Plungerrohr-Kern
7	Otturatore	Shutter	Verschluss
8	Molla	Spring	Feder
9	Piattello	Support	Scheibe
10	Pastiglia	Seal	Dichtung
11	Molla	Spring	Feder
12	Rondella	Washer	Beilagscheibe
13	Corpo	Valve body base	Grundkörper
14	O-ring	O-ring	O-Ring
15	Rondella	Washer	Beilagscheibe
16	Gommino di tenuta	Rubber seal	Dichtung
17	Molla	Spring	Feder
RICAMBI		SPARE PARTS	ERSATZTEILE
A	Bobina	Coil	Magnetspule
B	Gruppo pilota (C.A.)	Pilot unit (A.C.)	Verschleißteilsatz Komplett (A.C.)
B1	Gruppo pilota (C.C.)	Pilot unit (D.C.)	Verschleißteilsatz Komplett (D.C.)
C	Cannotto	Tube guide	Plungerrohr
D	Nucleo mobile	Plunger	Plunger

**ELETTROVALVOLA AZIONE DIRETTA 2/2 VIE N.A.  
SOLENOID VALVE DIRECT ACTING 2/2 WAY N.O.  
DIREKTGESTEUERTES MAGNETVENTIL 2/2 WEGE S.O.**



**I CARATTERISTICHE GENERALI**

**PRESSIONE MINIMA DI FUNZIONAMENTO** 0 bar

**PARTI A CONTATTO CON IL FLUIDO**

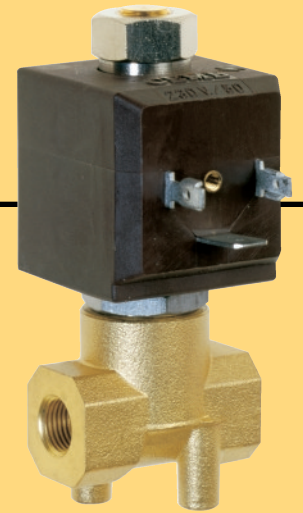
**TENUTA** EPDM - NBR - FPM (6500 SOLO NBR)  
**CORPO** OTTONE CON SEDE DI TENUTA INOX  
**ORGANI INTERNI** ACCIAIO INOX  
**FLUIDI** ACQUA - ARIA - VAPORE - OLII LEGGERI - GASOLIO

**VALVOLA UNIDIREZIONALE**

**VALVOLA ISPEZIONABILE**

**POSIZIONE DI MONTAGGIO** Qualsiasi; sconsigliata quella con bobina rivolta verso il basso.  
**TEMPERATURA AMBIENTE** 80°C, in D.C. per temperature superiori a 40°C, le performance (M.O.P.D.) potrebbero diminuire.

**VALVOLA FORNITA CON** CONNETTORE TRIPOLARE UNI ISO 4400 (DIN 43650A) - IP65



**UK GENERAL FEATURES**

**MINIMUM WORKING PRESSURE** 0 bar

**PARTS IN CONTACT WITH THE FLUID**

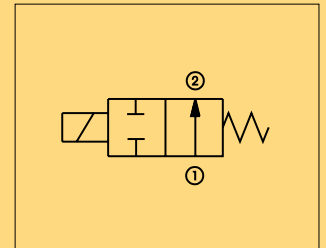
**SEALING** EPDM - NBR - FPM (only NBR for 6500)  
**BODY** BRASS WITH SEALING SEAT IN STAINLESS STEEL  
**INTERNAL PARTS** STAINLESS STEEL  
**FLUIDS** WATER - AIR - STEAM - LIGHT OILS - DIESEL OIL

**ONE WAY DIRECTION VALVE**

**SERVICEABLE VALVE**

**MOUNTING POSITION** Any, the position with the coil downwards is not recommended.  
**AMBIENT TEMPERATURE** 80°C, in D.C. for temperatures higher than 40°C, the performances (M.O.P.D.) could decrease.

**VALVE SUPPLIED WITH** THREE POLE PLUG CONNECTOR UNI ISO 4400 (DIN 43650A) -IP65



**D ALLGEMEINE MERKMALE**

**MINIMALER ARBEITSDRUCK** 0 bar

**MEDIUMS BERUEHRTE TEILE**

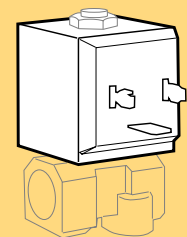
**DICHTUNG** EPDM - NBR - FPM (fuer 6500 nur NBR )  
**KOERPER** MESSING MIT VENTILSITZ AUS EDELSTAHL  
**INNERE ELEMENTE** EDELSTAHL  
**MEDIEN** WASSER - LUFT - DAMPF - LEICHTE OELE - DIESEL OEL

**UNIDIREKTIONALES VENTIL**

**VENTIL WARTUNGSFREUNDLICH**

**MONTAGEPOSITION** Keine Einschränkungen. Fuer Montage mit dem Spulenkopf senkrecht nach unten, auf Anfrage.  
**UMGEBUNGSTEMPERATUR** 80°C, im D.C.- Betrieb koennen Temperaturen ueber 40°C, die Schaltkraefte (M.O.P.D.) des Ventils beeintraechtigen.

**LIEFERUMFANG** DREIPOLIGER STECKER UNI ISO 4400 (DIN 43650A)-IP65



**BOBINA TIPO B6 NA**  
**COIL TYPE B6 NA**  
**SPULE TYP B6 NA**