

CARATTERISTICHE SPECIFICATIONS

ATTACCHI PIPES in → out	Ø mm	CODICE CODE	KV m ³ /h	M.O.P.D. bar		DIMENSIONI/DIMENSIONS mm				PESO/WEIGHT Kg
				AC	DC	A	B	C	D	
1/8"	1,5	6711	0.080	25	17	35	77	47	62	0.250
1/8"	2,0	6711	0.130	22	10	35	77	47	62	0.250
1/8"	2,8	6711	0.265	10	7	35	77	47	62	0.250
1/4"	1,5	6712	0.080	25	17	35	77	47	62	0.230
1/4"	2,0	6712	0.130	22	10	35	77	47	62	0.230
1/4"	2,5	6712	0.210	12	8	35	77	47	62	0.230
1/4"	2,8	6712	0.265	10	7	35	77	47	62	0.230
1/4"	2,8	6724	0.265	10	7	59	80	47	61	0.270
FLANGIA / FLANGE	1,5	6770	0.070	25	17	33	60	47	-	0.220
FLANGIA / FLANGE	2,0	6770	0.110	22	10	33	60	47	-	0.220
FLANGIA / FLANGE	2,8	6770	0.180	10	7	33	60	47	-	0.220

CARATTERISTICHE ELETTRICHE ELECTRICAL INFORMATION

V~	V=	POTENZA/POWER NOMINALE HOLDING		SPUNTO IN RUSH
		12VA	21VA	
12 24 48 110 230 400	12 24 48 110	50 60 Hz	12VA	21VA
			16W	

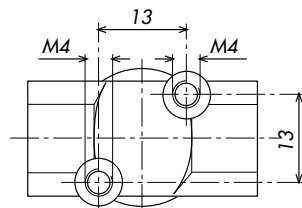
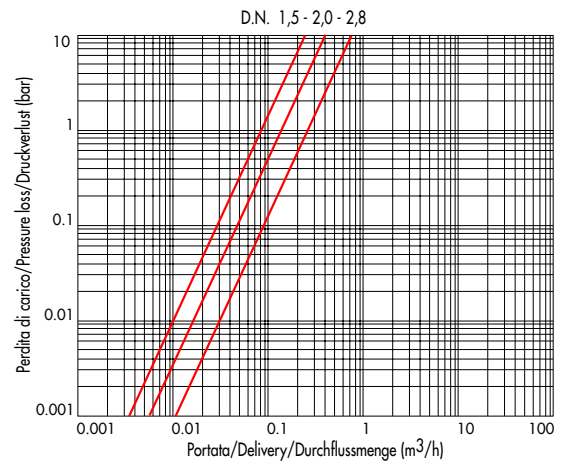
Per dettagli costruttivi sulle bobine vedi capitolo "INFORMAZIONI DI PROGETTO"
For construction details of the coils see chapter "PROJECT INFORMATION"
Ausführliche Daten über die Ventilspulen finden Sie unter Abschnitt "TECHNISCHE INFORMATIONEN"

MAX TEMPERATURA MAX TEMPERATURE

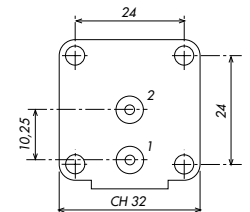
FLUIDI/FLUIDS			AMBIENTE/AMBIENT
NBR	EPDM	FPM	
90°C	155°C	150°C	80°C

Disponibili bobine per temp. ambienti fino a 120°C
Coils available for ambient temperatures up to 120°C
Spulen verfügbar für Umgebungstemperaturen bis zu 120°C

DIAGRAMMA PERDITA DI CARICO PRESSURE LOSS DIAGRAM

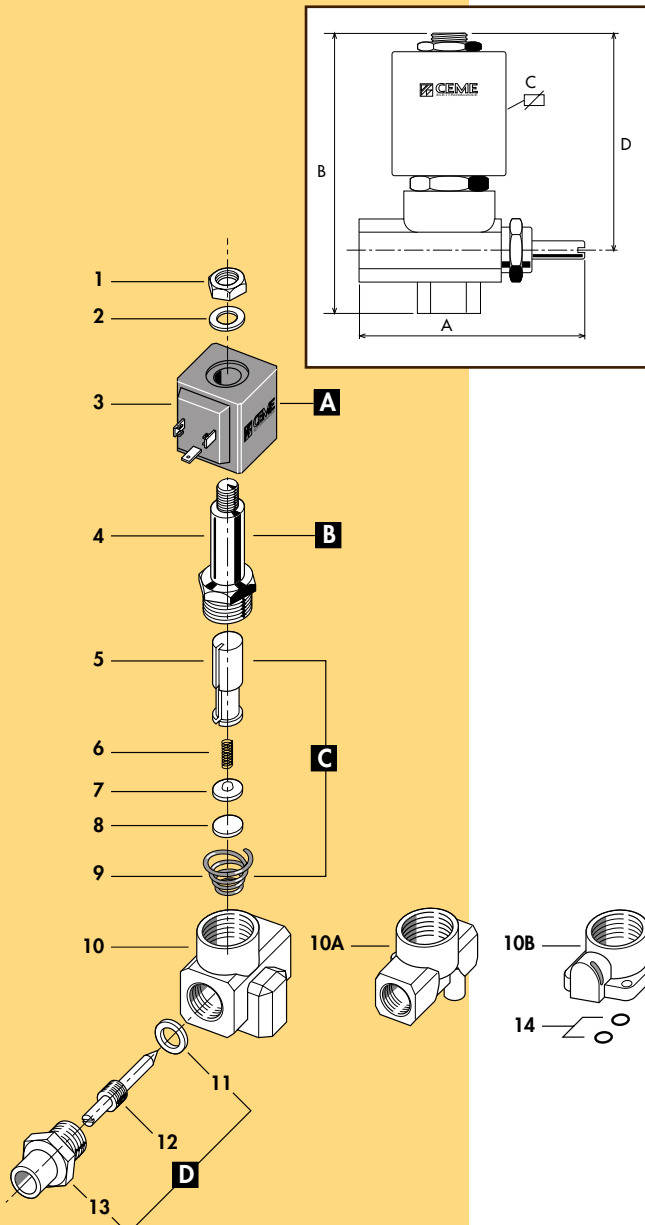
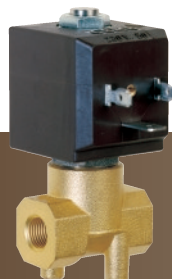


6711 - 6712



6724

6770



1 Dado	Lock nut	Mutter
2 Rondella	Washer	Beilagscheibe
3 Bobina	Coil	Magnetspule
4 Cannotto	Tube guide	Plungerrohr
5 Nucleo mobile	Plunger	Plunger
6 Molla	Spring	Feder
7 Piattello	Support	Scheibe
8 Pastiglia	Seal	Dichtung
9 Molla	Spring	Feder
10 Corpo	Valve body base	Grundkörper
11 Rondella	Washer	Spindeldichtung
12 Spillo	Plunger	Spindel
13 Dado di regolazione	Regular lock nut	Haltemutter-Spindel
14 O-ring	O-ring	O-Ring
RICAMBI	SPARE PARTS	ERSATZTEILE
A Bobina	Coil	Magnetspule
B Cannotto	Tube guide	Plungerrohr
C Nucleo mobile	Plunger	Plunger
D Gruppo di regolazione	Regulator unit	Spindel

ELETTROVALVOLA AZIONE DIRETTA 2/2 VIE N.C.
SOLENOID VALVE DIRECT ACTING 2/2 WAY N.C.
DIREKTGESTEUERTES MAGNETVENTIL 2/2 WEGE S.G.



I CARATTERISTICHE GENERALI

PRESSIONE MINIMA DI FUNZIONAMENTO 0 bar

PARTI A CONTATTO CON IL FLUIDO

TENUTA EPDM - NBR - FPM
CORPO OTTONE CON SEDE DI TENUTA INOX
TUBO GUIDA INOX - Tenuta metallica con il corpo per tenute sicure anche ad alte temperature di impiego.
 - Migliore resistenza alla corrosione.

ORGANI INTERNI ACCIAIO INOX
FLUIDI ACQUA - ARIA - VAPORE - OLII LEGGERI
 (GAS PER 6711- 6712)

VALVOLA UNIDIREZIONALE
VALVOLA ISPEZIONABILE
VALVOLA FORNITA CON
POSIZIONE DI MONTAGGIO CONNETTORE TRIPOLARE UNI ISO 4400 (DIN 43650A) - IP65 (TRANNE PER 6724)
TEMPERATURA AMBIENTE Qualsiasi; sconsigliata quella con bobina rivolta verso il basso
 80°C, in D.C. per temperature superiori a 40°C, le performance (M.O.P.D.) potrebbero diminuire

ESECUZIONI SPECIALI CORPO VALVOLA INOX (AISI 303)
ACCESSORI -MANOPOLA (6724)
 -CONNETTORE TRIPOLARE UNI ISO 4400 (DIN 43650A) - IP65 (6724)
 -RACCORDO 1/4" M- PORTAGOMMA

UK GENERAL FEATURES

MINIMUM WORKING PRESSURE 0 bar

PARTS IN CONTACT WITH THE FLUID

SEALING EPDM - NBR - FPM
BODY BRASS WITH SEALING SEAT IN STAINLESS STEEL
STAINLESS STEEL TUBE GUIDE - Metallic sealing with the body for safety sealing also for high temperature applications.
 - Improved corrosion resistance.

INTERNAL PARTS STAINLESS STEEL
FLUIDS WATER - AIR - STEAM- LIGHT OILS
 (GAS FOR 6711- 6712)

ONE WAY DIRECTION VALVE
SERVICEABLE VALVE
VALVE SUPPLIED WITH
MOUNTING POSITION THREE POLE PLUG CONNECTOR UNI ISO 4400 (DIN 43650A) -IP65 (EXCEPT FOR 6724)
AMBIENT TEMPERATURE Any, the position with the coil downwards is not recommended.
SPECIAL EXECUTIONS 80°C, in D.C. for temperatures higher than 40°C, the performances (M.O.P.D.) could decrease.
ACCESSORIES VALVE BODY STAINLESS STEEL (AISI 303)
 -KNOB (6724)
 -THREE POLE PLUG CONNECTOR UNI ISO 4400 (DIN 43650A) -IP 65 (6724)
 -CONNECTION 1/4" M-HOSE BIB

D ALLGEMEINE MERKMALE

MINIMALER ARBEITSDRUCK 0 bar

MEDIUMS BERUEHRTE TEILE

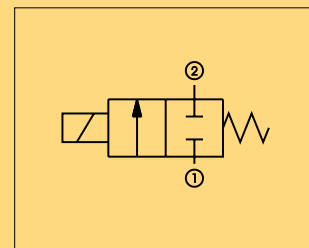
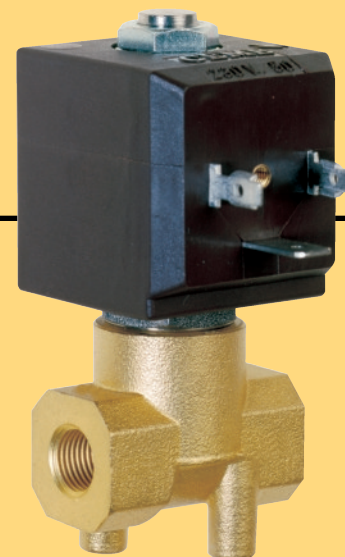
DICHTUNG EPDM - NBR - FPM
KOERPER MESSING MIT VENTILSITZ AUS EDELSTAHL
PLUNGERROHR AUS EDELSTAHL

- Metallische Dichtung fuer einen sicheren Einsatz auch bei hohen Medien Temperaturen.
 - Bessere Korrosionsbestaendigkeit.

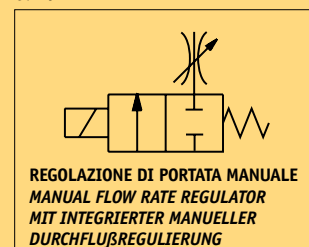
INNERE ELEMENTE EDELSTAHL
MEDIEN WASSER - LUFT - DAMPF - LEICHTE OELE
 (GAS FUER 6711- 6712)

UNIDIREKTIONALES VENTIL
VENTIL WARTUNGSFREUNDLICH
LIEFERUNFANG DREIPOLIGER STECKER UNI ISO 4400 (DIN 43650A)-IP65 (AUSSER FUER 6724)
MONTAGEPOSITION Keine Einschränkungen. Fuer Montage mit dem Spulenkopf senkrecht nach unten, auf Anfrage.
UMGEBUNGSTEMPERATUR 80°, im D.C.-Betrieb koennen Temperaturen ueber 40°C, die Schaltkraefte (M.O.P.D.) des Ventils beeintraechtigen.

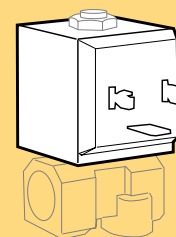
SONDERAUSFUEHRUNGEN VENTILKOERPER AUS EDELSTAHL (AISI 303)
ZUBEHOER -DREHKNOPF (6724)
 -DREIPOLIGER STECKER UNI ISO 4400 (DIN 43650A) -IP 65 (6724)
 -ANSCHLUSS 1/4" M- SCHLAUCHNIPPEL



6724



REGOLAZIONE DI PORTATA MANUALE
 MANUAL FLOW RATE REGULATOR
 MIT INTEGRIERTER MANUELLER
 DURCHFLUSSREGULIERUNG



BOBINA TIPO B6
 COIL TYPE B6
 SPULE TYP B6