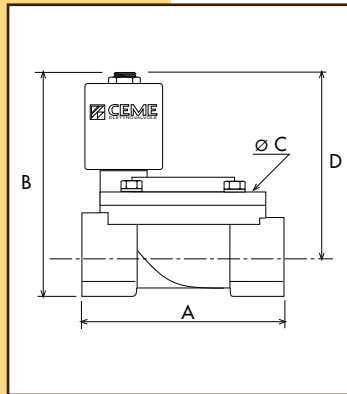


CARATTERISTICHE SPECIFICATIONS

ATTACCHI PIPES in → out	Ø mm	CODICE CODE	KV m ³ /h	M.O.P.D. bar		DIMENSIONI/DIMENSIONS mm				PESO/WEIGHT Kg
				AC	DC	A	B	C	D	
1/4"	10	8512	1.86	10	10	61	73	48	60	0.500
3/8"	10	8513	1.86	10	10	61	73	48	60	0.450
1/2"	12	8514	2.10	10	10	61	73	48	60	0.400
3/8" NPT	12	8523	1.86	10	10	61	73	48	60	0.450
1/2" NPT	12	8524	2.10	10	10	69	73	48	60	0.410



CARATTERISTICHE ELETTRICHE ELECTRICAL INFORMATION

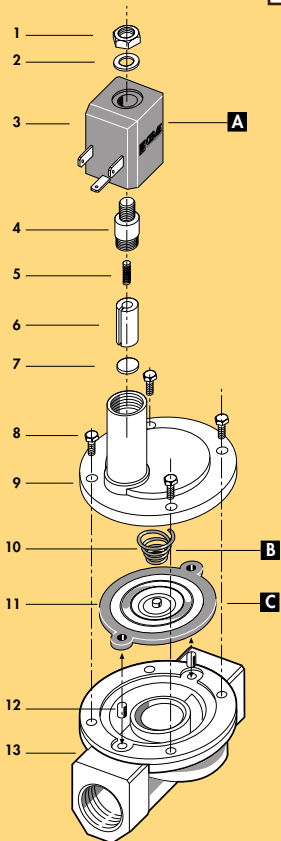
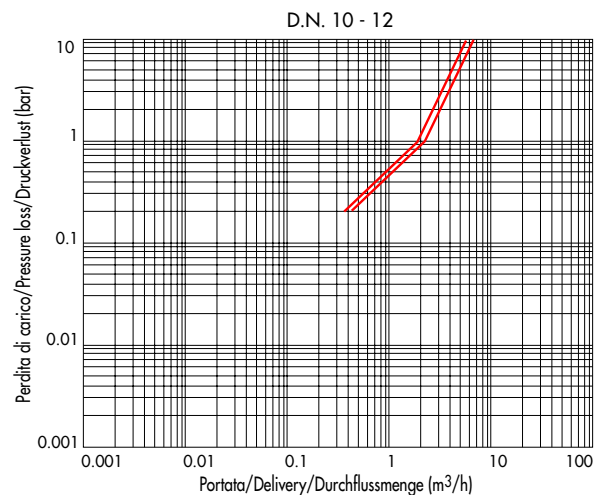
							POTENZA/POWER			
							NOMINALE HOLDING	SPUNTO IN RUSH		
V~	12	24	48	110	230	400	50	60 Hz	11VA	14,5VA
V=	12	24	48	110					9W	

Per dettagli costruttivi sulle bobine vedi capitolo "INFORMAZIONI DI PROGETTO"
For construction details of the coil see chapter "PROJECT INFORMATION"
Ausführliche Daten über die Ventilsolenen finden Sie unter Abschnitt "TECHNISCHE INFORMATIONEN"

MAX TEMPERATURA MAX TEMPERATURE

FLUIDI/FLUIDS				AMBIENTE/AMBIENT
NBR	EPDM	EPDM/KTW	FPM	80°C
90°C	130°C	130°C	150°C	

DIAGRAMMA PERDITA DI CARICO PRESSURE LOSS DIAGRAM



1 Dado	Lock nut	Mutter
2 Rondella	Washer	Beilagscheibe
3 Bobina	Coil	Magnetspule
4 Nucleo fisso	Tube top	Kern
5 Molla	Spring	Feder
6 Nucleo mobile	Plunger	Plunger
7 Pastiglia	Seal	Dichtung
8 Vite	Screw	Schraube
9 Coperchio	Valve body top	Deckel
10 Molla	Spring	Feder
11 Membrana	Diaphragm	Membrane
12 Bussola	Bush	Buchse
13 Corpo	Valve body base	Grundkörper
RICAMBI	SPARE PARTS	ERSATZTEILE
A Bobina	Coil	Magnetspule
B Molla	Spring	Feder
C Membrana	Diaphragm	Membrane



ELETTROVALVOLA SERVOCOMANDATA 2/2 VIE N.C.
SOLENOID VALVE PILOT OPERATED 2/2 WAY N.C.
SERVOGESTEUERTES MAGNETVENTIL 2/2 WEGE S.G.



KTW

I CARATTERISTICHE GENERALI
PRESSIONE MINIMA DIFFERENZIALE DI FUNZIONAMENTO 0,25 bar
PARTI A CONTATTO CON IL FLUIDO

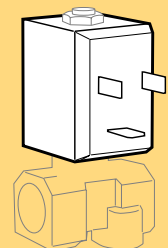
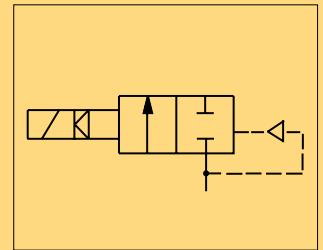
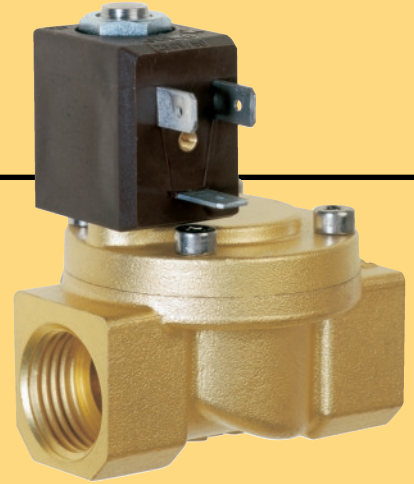
TENUTA	NBR a richiesta FPM - EPDM EPDM-KTW tenuta adatta e certificata DVGW per l'intercettazione di acqua potabile
CORPO	OTTONE
ORGANI INTERNI	ACCIAIO INOX
FLUIDI	ARIA - ACQUA - OLII LEGGERI
VALVOLA UNIDIREZIONALE	
VALVOLA ISPEZIONABILE	
VALVOLA FORNITA CON	CONNETTORE TRIPOLARE UNI ISO 6952 (DIN 43650B)- IP65
POSIZIONE DI MONTAGGIO	Qualsiasi; sconsigliata quella con bobina rivolta verso il basso
TEMPERATURA AMBIENTE	80°C, in D.C. per temperature superiori a 40°C, le performance (M.O.P.D.) potrebbero diminuire
ESECUZIONI SPECIALI	VERSIONE ANTI COLPO D'ARIETE CON TEMPO DI CHIUSURA PIU' LENTO

UK GENERAL FEATURES
MINIMUM DIFFERENTIAL WORKING PRESSURE 0,25 bar
PARTS IN CONTACT WITH THE FLUID

SEALING	NBR on request FPM - EPDM EPDM-KTW sealing approved and DVGW certified for interception of potable water
BODY	BRASS
INTERNAL PARTS	STAINLESS STEEL
FLUIDS	AIR - WATER - LIGHT OILS
ONE WAY DIRECTION VALVE	
SERVICEABLE VALVE	
VALVE SUPPLIED WITH	THREE POLE PLUG CONNECTOR UNI ISO 6952 (DIN 43650B)-IP65
MOUNTING POSITION	Any, the position with the coil downwards is not recommended.
AMBIENT TEMPERATURE	80°C, in D.C. for temperatures higher than 40°C, the performances (M.O.P.D.) could decrease.
SPECIAL EXECUTIONS	VERSION WITH WATER HAMMER DEVICE FOR SLOWER CLOSING TIME.

D ALLGEMEINE MERKMALE
MINIMALER DIFFERENTIALARBEITSDRUCK 0,25 bar
MEDIUMS BERUEHRTE TEILE

DICHTUNG	NBR auf Nachfrage FPM - EPDM EPDM-KTW Dichtung DVGW-KTW zertifiziert fuer den Trinkwassereinsatz.
KOERPER	MESSING
INNERE ELEMENTE	EDELSTAHL
MEDIEN	LUFT - WASSER - LEICHTE OELE
UNIDIREKTIONALES VENTIL	
VENTIL WARTUNGSFREUNDLICH	
LIEFERUMFANG	DREIPOLIGER STECKER UNI ISO 6952 (DIN 43650B) -IP65
MONTAGEPOSITION	Keine Einschränkungen. Fuer Montage mit dem Spulenkopf senkrecht nach unten, auf Anfrage.
UMGEBUNGSTEMPERATUR	80°C, im D.C.- Betrieb koennen Temperaturen ueber 40°C, die Schaltkrafte (M.O.P.D.) des Ventils beeintraechtigen.
SONDERAUSFUEHRUNGEN	VERSION LANGSAM SCHLIESSEND.



BOBINA TIPO B4
COIL TYPE B4
SPULE TYP B4