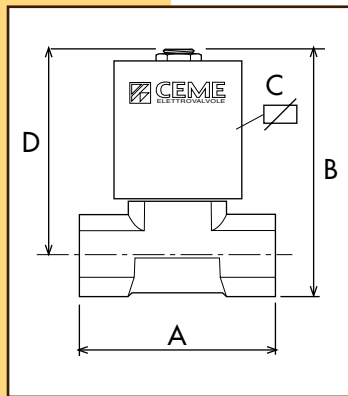


### CARATTERISTICHE SPECIFICATIONS



ATTACCHI PIPES in → out	Ø mm	CODICE CODE	KV m <sup>3</sup> /h	M.O.P.D. bar		DIMENSIONI/DIMENSIONS mm				PESO/WEIGHT Kg
				AC	DC	A	B	C	D	
1/2" NPT	3,5	9309	0.30	15	7	56	76	60	63	0.435
1/4"	2,8	9312	0.23	20	10	42	69	60	60	0.350
1/4"	3,5	9312	0.27	15	7	42	69	60	60	0.350
3/8"	2,8	9313	0.23	20	10	47	73	60	62	0.380
3/8"	3,5	9313	0.30	15	7	47	73	60	62	0.380
3/8"	5,0	9313	0.48	5	3	47	73	60	62	0.380
1/2"	2,8	9314	0.23	20	10	56	76	60	63	0.435
1/2"	3,5	9314	0.30	15	7	56	76	60	63	0.435
1/2"	5,0	9314	0.48	5	3	56	76	60	63	0.435

### CARATTERISTICHE ELETTRICHE ELECTRICAL INFORMATION

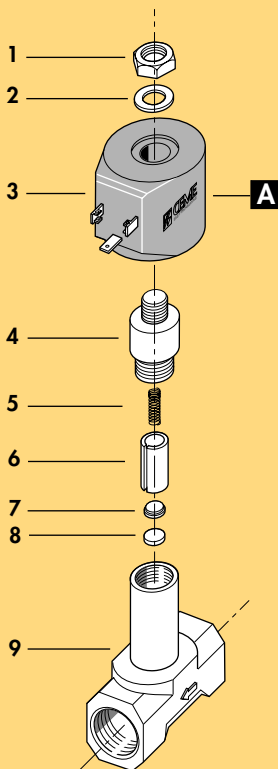
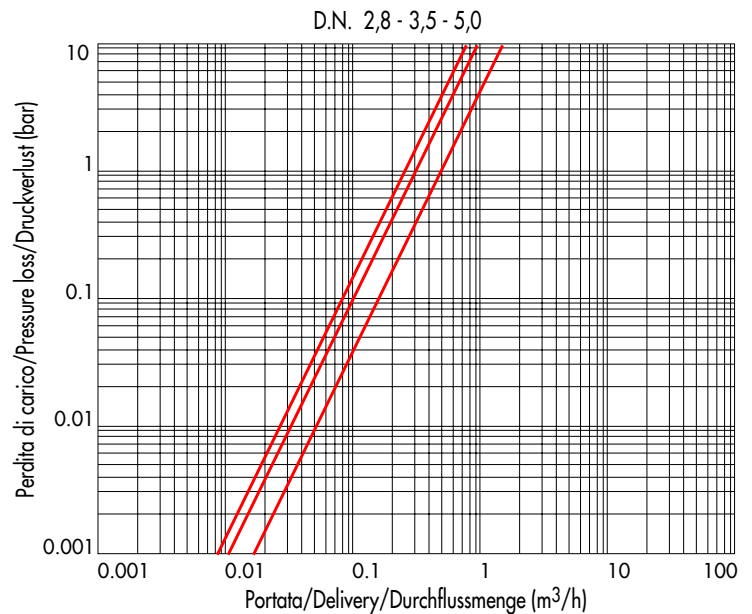
							POTENZA/POWER				
							NOMINALE HOLDING	SPUNTO IN RUSH			
V~	12	24	48	110	230	400	50	60	Hz	27VA	38VA
V=	12	24	48	110						14W	

Per dettagli costruttivi sulle bobine vedi capitolo "INFORMAZIONI DI PROGETTO"  
For construction details of the coils see chapter "PROJECT INFORMATION"  
Ausführliche Daten über die Ventilspulen finden Sie unter Abschnitt "TECHNISCHE  
INFORMATIONEN"

### MAX TEMPERATURA MAX TEMPERATURE

FLUIDI/FLUIDS			AMBIENTE/AMBIENT
EPDM	EPDM-KTW	FPM	80°C
155°C	130°C	150°C	

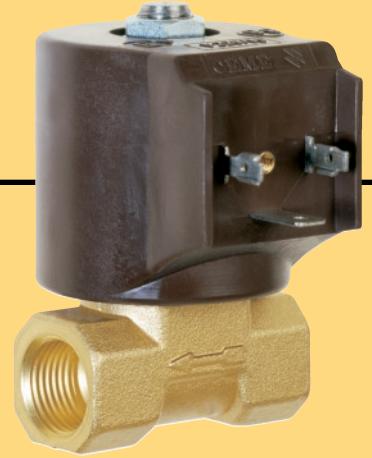
### DIAGRAMMA PERDITA DI CARICO PRESSURE LOSS DIAGRAM



1 Dado	Lock nut	Mutter
2 Rondella	Washer	Beilagscheibe
3 Bobina	Coil	Magnetspule
4 Nucleo fisso	Tube top	Kern
5 Molla	Spring	Feder
6 Nucleo mobile	Plunger	Plunger
7 Piattello	Support	Scheibe
8 Pastiglia	Seal	Dichtung
9 Corpo	Valve body base	Grundkörper
<b>RICAMBI</b>	<b>SPARE PARTS</b>	<b>ERSATZTEILE</b>
<b>A</b> Bobina	Coil	Magnetspule



**ELETTROVALVOLA AZIONE DIRETTA 2/2 VIE N.C.**  
**SOLENOID VALVE DIRECT ACTING 2/2 WAY N.C.**  
**DIREKTGESTEUERTES MAGNETVENTIL 2/2 WEGE S.G.**



I

**CARATTERISTICHE GENERALI**

**PRESSIONE MINIMA DI FUNZIONAMENTO** 0 bar

**PARTI A CONTATTO CON IL FLUIDO**

**TENUTA** EPDM - FPM - EPDM-KTW  
**CORPO** OTTONE CON SEDE DI TENUTA INOX (esclusa la sede Ø 5)  
**ORGANI INTERNI** ACCIAIO INOX  
**FLUIDI** ACQUA - ARIA - GAS - VAPORE - GASOLIO - NAFTA

**VALVOLA UNIDIREZIONALE**

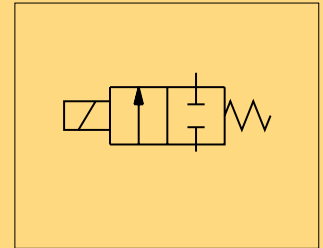
**VALVOLA NON ISPEZIONABILE**

**VALVOLA FORNITA CON** CONNETTORE TRIPOLARE UNI ISO 4400 (DIN 43650A)-IP65

**POSIZIONE DI MONTAGGIO** Qualsiasi; sconsigliata quella con bobina rivolta verso il basso

**TEMPERATURA AMBIENTE** 80°C, in D.C. per temperature superiori a 40°C, le performance (M.O.P.D.) potrebbero diminuire

**ACCESSORI** FILTRO MECCANICO IN INGRESSO (9314)



UK

**GENERAL FEATURES**

**MINIMUM WORKING PRESSURE** 0 bar

**PARTS IN CONTACT WITH THE FLUID**

**SEALING** EPDM - FPM - EPDM-KTW  
**BODY** BRASS WITH SEALING SEAT IN STAINLESS STEEL (except for valve Ø 5)  
**INTERNAL PARTS** STAINLESS STEEL  
**FLUIDS** WATER - AIR- GAS - STEAM - DIESEL OIL - NAFTA

**ONE WAY DIRECTION VALVE**

**NON-SERVICEABLE VALVE**

**VALVE SUPPLIED WITH** THREE POLE PLUG CONNECTOR UNI ISO 4400 (DIN 43650A)-IP65

**MOUNTING POSITION** Any, the position with the coil downwards is not recommended.

**AMBIENT TEMPERATURE** 80°C, in D.C. for temperatures higher than 40°C, the performances (M.O.P.D.) could decrease.

**ACCESSORIES** MECHANICAL FILTER ON THE INLET SIDE (9314)

D

**ALLGEMEINE MERKMALE**

**MINIMALER ARBEITSDRUCK** 0 bar

**MEDIUMS BERUEHRTE ELEMENTE**

**DICHTUNG** EPDM - FPM - EPDM-KTW  
**KOERPER** MESSING MIT VENTILSITZ AUS EDELSTAHL (ausser fuer Ventil Ø 5)  
**INNERE ELEMENTE** EDELSTAHL  
**MEDIEN** WASSER - LUFT - GAS - DAMPF - DIESEL OEL - NAFTA

**UNIDIREKTIONALES VENTIL**

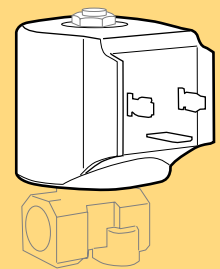
**VENTIL WARTUNGSFREI**

**LIEFERUMFANG** DREIPOLIGER STECKER UNI ISO 4400 (DIN 43650A) -IP65

**MONTAGEPOSITION** Keine Einschränkungen. Fuer Montage mit dem Spulenkopf senkrecht nach unten, auf Anfrage.

**UMGEBUNGSTEMPERATUR** 80°C, im D.C- Betrieb koennen Temperaturen ueber 40°C, die Schaltkreaefte (M.O.P.D.) des Ventils beeintraechtigen.

**ZUBEHOER** MECHANISCHER FEINFILTER AN DER EINGANGSSEITE (9314)



**BOBINA TIPO B12**  
**COIL TYPE B12**  
**SPULE TYP B12**